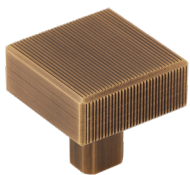


DIGBETH COLLECTION

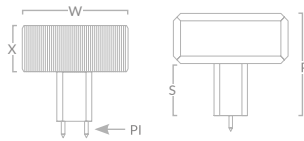
Discover luxury hardware redefined. Presenting industrial design-led style, the Digbeth collection offers a choice of textured hand-finished linear ridging or smooth brass. Frame each piece by opting for a striking backplate.



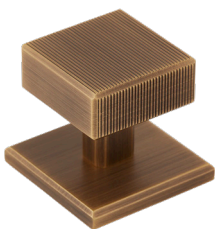
DIGBETH RIDGED CABINET KNOB



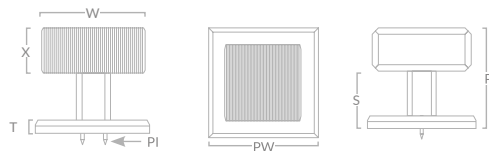
Code	Width sq. (W)	Projection (P)	Pin dia. (PI)	Stem (S)	X
DIGK/KNOBONLY/32	32mm	31mm	2.5mm	17mm	14mm
DIGK/KNOBONLY/38	38mm	33mm	2.5mm	17mm	16mm



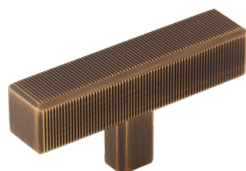
DIGBETH RIDGED CABINET KNOB WITH BACKPLATE



Code	Width sq. (W)	Projection (P)	Pin dia. (PI)	Stem (S)	Plate Width sq. (PW)	Plate Thickness (T)	X
DIGK/32	32mm	35mm	2.5mm	22mm	38mm	5mm	14mm
DIGK/38	38mm	38mm	2.5mm	22mm	45mm	5mm	16mm

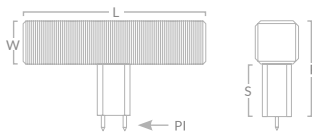


DIGBETH RIDGED T-BAR HANDLE

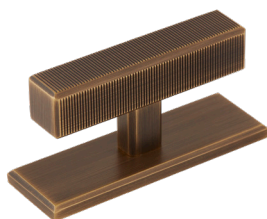


Code	Length (L)	Width sq. (W)	Projection (P)	Stem (S)	Pin Dia (PI)
DIGT/TBARONLY/67	67mm	16mm	33mm	17mm	2.5mm

Not suitable for appliance doors

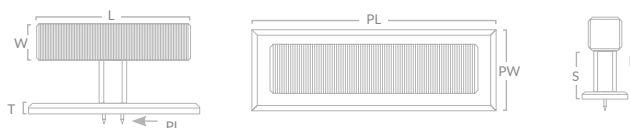


DIGBETH RIDGED T-BAR HANDLE WITH BACKPLATE



Code	Length (L)	Width sq. (W)	Projection (P)	Stem (S)	Pin Dia (PI)	Plate Length (PL)	Plate Width (PW)	Plate Thickness (T)
DIGT/67	67mm	16mm	38mm	22mm	2.5mm	77mm	25mm	5mm

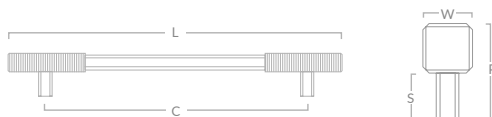
Not suitable for appliance doors



DIGBETH RIDGED CABINET & APPLIANCE HANDLE



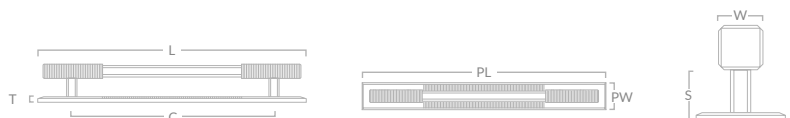
Code	Centres (C)	Length (L)	Width sq. (W)	Stem (S)	Projection (P)
DIG/PULLONLY/128	128mm	182mm	12.7mm	20mm	33mm
DIG/PULLONLY/160	160mm	217mm	16mm	23mm	39mm
DIG/PULLONLY/224	224mm	291mm	16mm	23mm	39mm
DIG/PULLONLY/288	288mm	355mm	16mm	23mm	39mm
DIG/PULLONLY/APP/384	384mm	461mm	19mm	30mm	49mm
DIG/PULLONLY/APP/608	608mm	685mm	19mm	30mm	49mm



DIGBETH RIDGED CABINET & APPLIANCE HANDLE WITH BACKPLATE



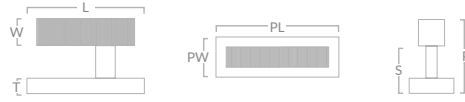
Code	Centres (C)	Length (L)	Width sq. (W)	Stem (S)	Projection (P)	Plate Thickness (T)	Plate Length (PL)	Plate Width (PW)
DIG/128	128mm	182mm	12.7mm	25mm	37mm	5mm	191mm	22mm
DIG/160	160mm	217mm	16mm	29mm	45mm	6.5mm	227mm	25mm
DIG/224	224mm	291mm	16mm	29mm	45mm	6.5mm	301mm	25mm
DIG/288	288mm	355mm	16mm	29mm	45mm	6.5mm	365mm	25mm
DIG/APP/384	384mm	461mm	19mm	36mm	55mm	6.5mm	474mm	32mm
DIG/APP/608	608mm	685mm	19mm	36mm	55mm	6.5mm	698mm	32mm



DIGBETH RIDGED HOOK



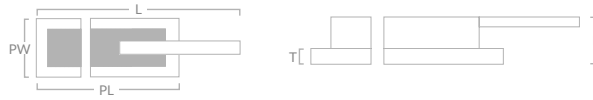
Code	Width sq. (W)	Projection (P)	Length (L)	Stem (S)	Plate Width (PW)	Plate Length (PL)	Plate Thickness (T)
DIG/HOOK/48	16mm	39mm	48mm	32mm	25mm	58mm	6.5mm



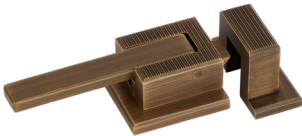
DIGBETH RIDGED LATCH



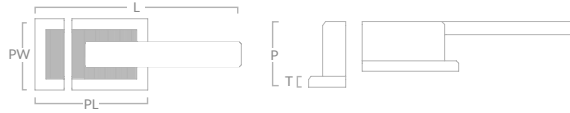
Code	Projection (P)	Length (L)	Plate Width (PW)	Plate Length (PL)	Plate Thickness (T)
DIG/LATCH/FLUSH/45	20mm	108mm	45mm	64mm	5mm
DIG/LATCH/FLUSH/55	30mm	153mm	55mm	81mm	6mm



DIGBETH RIDGED OFFSET LATCH



Code	Projection (P)	Length (L)	Plate Width (PW)	Plate Length (PL)	Plate Thickness (T)
DIG/LATCH/OFFSET/55	40mm	159mm	55mm	82mm	6mm

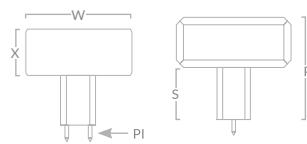




DIGBETH PLAIN CABINET KNOB



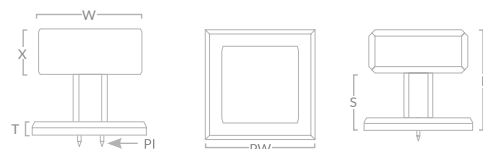
Code	Width sq. (W)	Projection (P)	Pin dia. (PI)	Stem (S)	X
DIGK/KNOBONLY/PLAIN/32	32mm	31mm	2.5mm	17mm	14mm
DIGK/KNOBONLY/PLAIN/38	38mm	33mm	2.5mm	17mm	16mm



DIGBETH PLAIN CABINET KNOB WITH BACKPLATE



Code	Width sq. (W)	Projection (P)	Pin dia. (PI)	Stem (S)	Plate Width sq. (PW)	Plate Thickness (T)	X
DIGK/PLAIN/32	32mm	35mm	2.5mm	22mm	38mm	5mm	14mm
DIGK/PLAIN/38	38mm	38mm	2.5mm	22mm	45mm	5mm	16mm



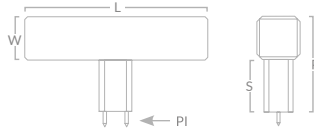
All product photographed in our burnished brass finish

DIGBETH PLAIN T-BAR HANDLE



Code	Length (L)	Width sq. (W)	Projection (P)	Stem (S)	Pin Dia (PI)
DIGT/TBARONLY/PLAIN/67	67mm	16mm	33mm	17mm	2.5mm

Not suitable for appliance doors

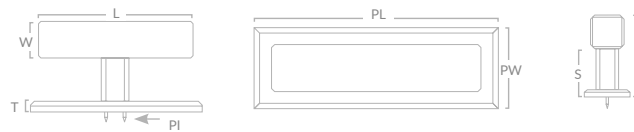


DIGBETH PLAIN T-BAR HANDLE WITH BACKPLATE



Code	Length (L)	Width sq. (W)	Projection (P)	Stem (S)	Pin Dia (PI)	Plate Length (PL)	Plate Width (PW)	Plate Thickness (T)
DIGT/PLAIN/67	67mm	16mm	38mm	22mm	2.5mm	77mm	25mm	5mm

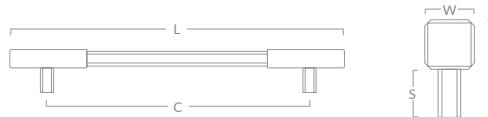
Not suitable for appliance doors



DIGBETH PLAIN CABINET & APPLIANCE HANDLE



Code	Centres (C)	Length (L)	Width sq. (W)	Stem (S)	Projection (P)
DIG/PULLONLY/PLAIN/128	128mm	182mm	12.7mm	20mm	33mm
DIG/PULLONLY/PLAIN/160	160mm	217mm	16mm	23mm	39mm
DIG/PULLONLY/PLAIN/224	224mm	291mm	16mm	23mm	39mm
DIG/PULLONLY/PLAIN/288	288mm	355mm	16mm	23mm	39mm
DIG/PULLONLY/APP/PLAIN/384	384mm	461mm	19mm	30mm	49mm
DIG/PULLONLY/APP/PLAIN/608	608mm	685mm	19mm	30mm	49mm



DIGBETH PLAIN CABINET & APPLIANCE HANDLE WITH BACKPLATE



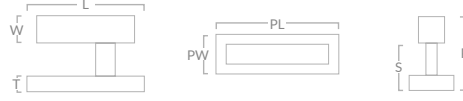
Code	Centres (C)	Length (L)	Width sq. (W)	Stem (S)	Projection (P)	Plate Thickness (T)	Plate Length (PL)	Plate Width (PW)
DIG/PLAIN/128	128mm	182mm	12.7mm	25mm	37mm	5mm	191mm	22mm
DIG/PLAIN/160	160mm	217mm	16mm	29mm	45mm	6.5mm	227mm	25mm
DIG/PLAIN/224	224mm	291mm	16mm	29mm	45mm	6.5mm	301mm	25mm
DIG/PLAIN/288	288mm	355mm	16mm	29mm	45mm	6.5mm	365mm	25mm
DIG/APP/PLAIN/384	384mm	461mm	19mm	36mm	55mm	6.5mm	474mm	32mm
DIG/APP/PLAIN/608	608mm	685mm	19mm	36mm	55mm	6.5mm	698mm	32mm



DIGBETH PLAIN HOOK



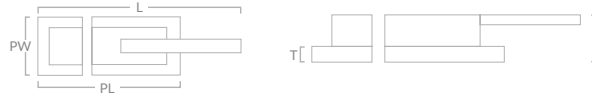
Code	Width sq. (W)	Projection (P)	Length (L)	Stem (S)	Plate Width (PW)	Plate Length (PL)	Plate Thickness (T)
DIG/HOOK/PLAIN/48	16mm	39mm	48mm	32mm	25mm	58mm	6.5mm



DIGBETH PLAIN LATCH



Code	Projection (P)	Length (L)	Plate Width (PW)	Plate Length (PL)	Plate Thickness (T)
DIG/LATCH/FLUSH/PLAIN/45	20mm	108mm	45mm	65mm	5mm
DIG/LATCH/FLUSH/PLAIN/55	30mm	153mm	55mm	81mm	5mm



DIGBETH PLAIN OFFSET LATCH



Code	Projection (P)	Length (L)	Plate Width (PW)	Plate Length (PL)	Plate Thickness (T)
DIG/LATCH/OFFSET/PLAIN/55	40mm	159mm	55mm	82mm	6mm

